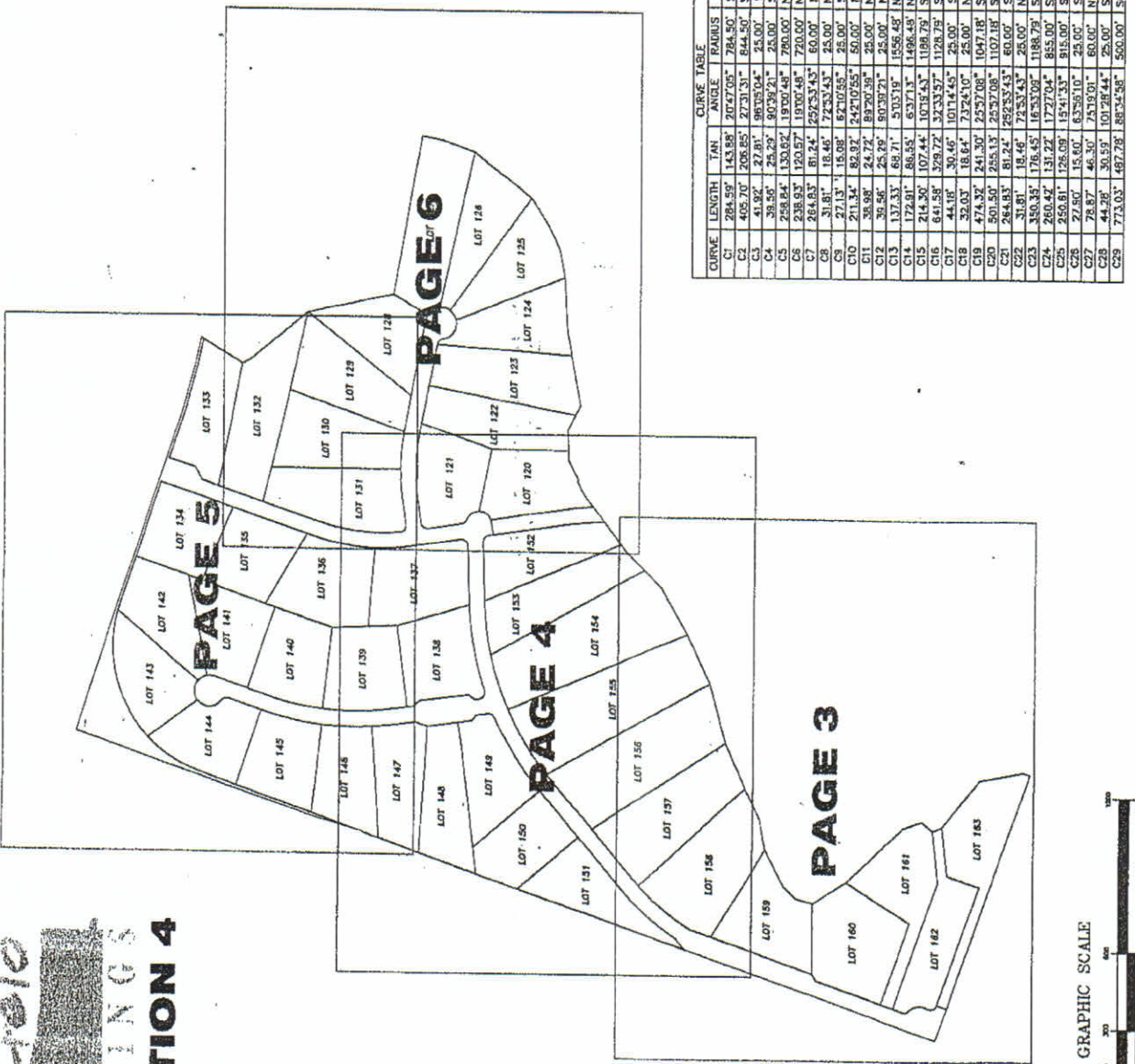


**Cholo**  
**SPRINGS**  
**SECTION 4**

*Vol. 1, Pg. 308*



LINE	LENGTH	BEARING
L1	102.77	S18°30'00"W
L2	103.97	S18°30'00"W
L3	29.02	S84°54'55"E
L4	29.02	S82°13'13"W
L5	102.04	S81°46'59"W
L6	106.03	S81°46'59"W
L7	107.04	S88°32'22"E
L8	128.91	S08°32'22"E
L9	17.67	S07°17'59"E
L10	44.93	S07°17'59"E
L11	28.69	S85°54'15"W
L12	28.69	S81°30'15"E
L13	32.32	S45°31'49"E
L14	46.76	N18°00'33"E
L15	104.72	S07°17'59"E
L16	104.72	S18°30'00"W
L17	128.91	S08°32'22"E
L18	28.98	N42°02'58"E
L19	28.98	N42°02'58"E
L20	40.90	N18°15'03"E
L21	131.09	S70°44'52"E
L22	100.01	S72°02'08"E
L23	73.95	N57°10'08"E
L24	108.69	N77°40'37"W
L25	35.95	N26°48'02"W
L26	80.83	N10°18'28"E
L27	131.51	N20°18'28"E
L28	131.72	N83°01'38"E
L29	100.00	N65°23'29"E
L30	107.90	N78°33'27"E
L31	92.12	N78°48'27"E
L32	41.35	S82°27'04"E
L33	61.58	S82°27'04"E
L34	82.46	N88°29'54"E
L35	38.58	N88°29'54"E
L36	51.73	N52°10'06"E
L37	50.93	N52°10'06"E
L38	81.34	N52°10'06"E
L39	81.34	N52°10'06"E
L40	82.43	N78°33'27"E
L41	136.55	N65°23'29"E
L42	118.11	N78°33'27"E
L43	159.08	N65°23'29"E
L44	87.83	N45°32'55"E
L45	66.85	N15°49'04"E
L46	76.85	N18°27'16"W
L47	55.27	N37°50'11"E
L48	39.05	N21°31'24"W
L49	26.54	N10°11'56"E
L50	103.64	N18°22'54"E
L51	55.00	N88°02'03"W
L52	94.85	N00°31'57"E
L53	111.50	N77°40'54"W
L54	10.51	N30°14'54"E

CURVE	LENGTH	TAN	ANGLE	RADIUS	BEARING	CHORD
C1	284.59	143.88	20°47'09"	784.50	S08°15'35"W	283.03
C2	405.70	206.85	27°31'31"	844.50	S04°33'24"W	401.81
C3	41.92	27.81	96°05'04"	25.00	S80°10'28"E	37.18
C4	38.56	25.29	90°39'21"	25.00	S36°21'19"W	35.56
C5	288.64	130.62	19°00'48"	790.00	N88°42'37"W	257.65
C6	288.63	120.57	19°00'48"	720.00	N88°42'37"W	237.84
C7	288.63	81.24	29°33'43"	60.00	N77°14'39"E	98.53
C8	31.81	18.46	72°33'43"	25.00	N42°45'21"W	29.70
C9	31.81	18.46	72°33'43"	25.00	N89°02'11"E	23.82
C10	21.14	8.93	84°00'00"	25.00	N32°42'10"W	38.15
C11	30.98	24.72	80°39'20"	25.00	N32°42'10"W	38.15
C12	30.98	24.72	80°39'20"	25.00	N32°42'10"W	38.15
C13	137.33	68.71	51°03'19"	1556.48	N06°57'02"W	137.26
C14	172.91	86.55	63°17'13"	1496.48	N06°57'02"W	172.81
C15	214.30	107.44	10°15'43"	1198.79	S66°31'01"W	214.01
C16	841.58	329.72	32°33'57"	1128.79	S66°31'01"W	832.88
C17	44.18	30.46	101°14'45"	25.00	S57°50'21"E	38.85
C18	32.03	18.64	73°24'10"	25.00	N57°44'08"E	29.88
C19	474.32	241.30	25°32'08"	1047.18	S05°40'30"W	470.28
C20	501.50	255.13	25°32'08"	1107.18	S05°40'30"W	497.22
C21	284.83	81.24	29°33'43"	25.00	S72°12'17"W	98.53
C22	31.81	18.46	72°33'43"	25.00	N17°47'43"W	29.70
C23	350.39	176.45	16°53'09"	1188.79	S07°39'36"W	349.09
C24	260.42	131.22	17°27'04"	855.00	S40°29'30"W	258.41
C25	250.81	128.09	15°41'33"	915.00	S41°22'15"W	249.82
C26	27.80	15.00	63°56'10"	25.00	S17°37'09"E	26.47
C27	28.87	16.30	73°19'01"	60.00	N08°59'45"W	73.31
C28	44.28	30.93	101°28'44"	25.00	S00°00'35"E	38.71
C29	773.03	149.72	88°54'36"	500.00	S63°49'23"W	698.31

